

# ProTek Systems, Inc.

PROTEK SYSTEMS, INC.  
1250 WALLACE DR UNIT B  
DELRAY BEACH, FL 33444  
TELEPHONE: 800-598-2153  
FAX: 561-395-4771  
SALES@PROTEKMAIL.COM

## WPSD-12 DIAMOND PLATE WALL SYSTEM

### FEATURES:

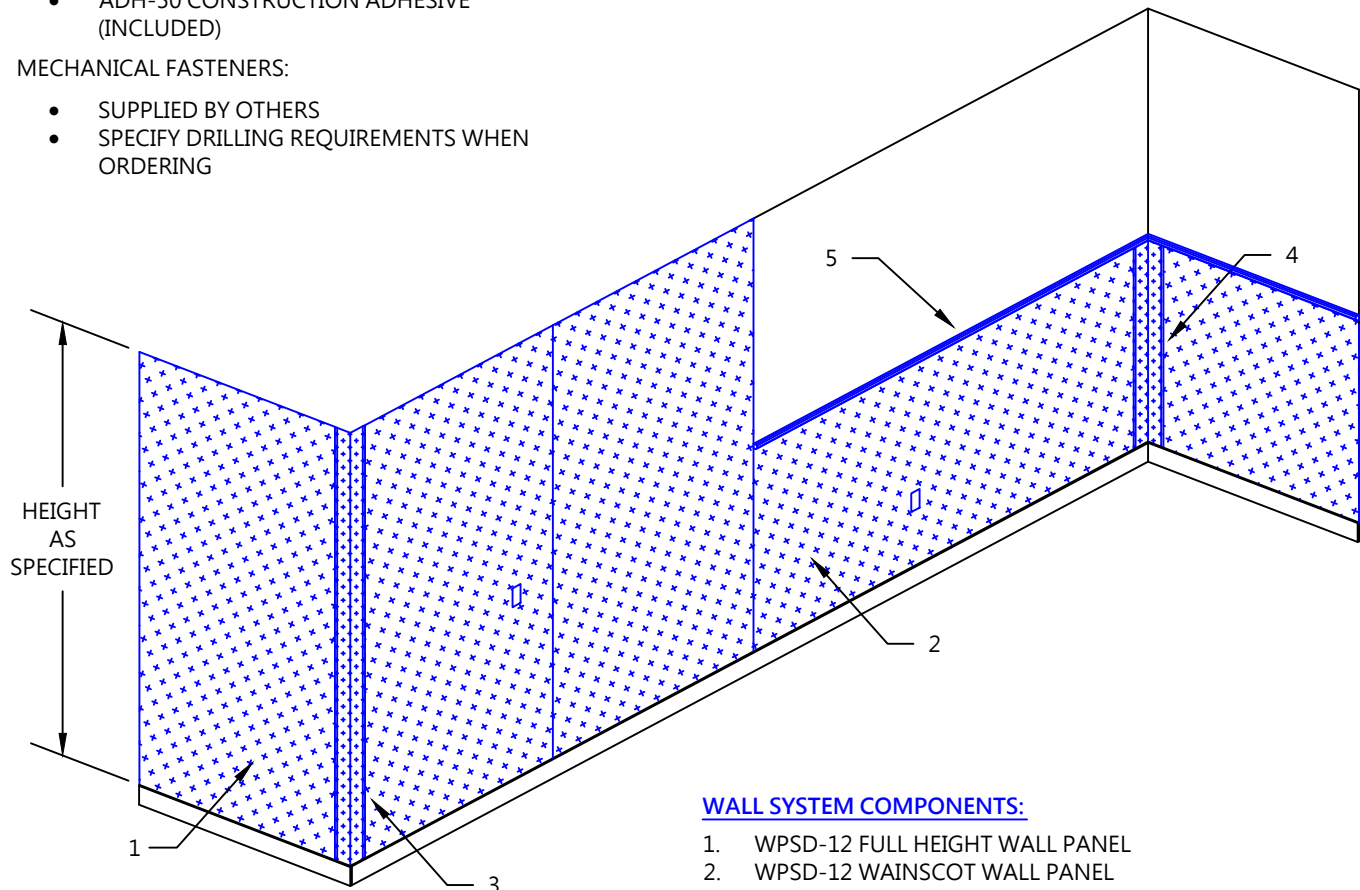
- 1/8" TYPE 304 MILL FINISH STAINLESS STEEL DIAMOND PLATE
- WAINSCOT OR FULL HEIGHT INSTALLATION
- BUTT SEAMS
- CUSTOM HEIGHTS AND ANGLES AVAILABLE
- OTHER GRADES AND FINISHES AVAILABLE

### TYPICAL WALL PANEL SIZES:

- 48" X 96"
- 48" X 120"
- 48" X 144"

### MOUNTING OPTIONS:

- ADHESIVE:
  - ADH-50 CONSTRUCTION ADHESIVE (INCLUDED)
- MECHANICAL FASTENERS:
  - SUPPLIED BY OTHERS
  - SPECIFY DRILLING REQUIREMENTS WHEN ORDERING



### WALL SYSTEM COMPONENTS:

1. WPSD-12 FULL HEIGHT WALL PANEL
2. WPSD-12 WAINSCOT WALL PANEL
3. WPSD-12-OCG-50 OUTSIDE CORNER
4. WPSD-12-ICG-50 INSIDE CORNER
5. EB-1 HIGH IMPACT TOP CAP

CUSTOMER:

PROJECT:

ARCHITECT:

SALES REP:

# WPSD-12

# ProTek Systems, Inc.

PROTEK SYSTEMS, INC.  
 1250 WALLACE DR UNIT B  
 DELRAY BEACH, FL 33444  
 TELEPHONE: 800-598-2153  
 FAX: 561-395-4771  
 SALES@PROTEKMAIL.COM

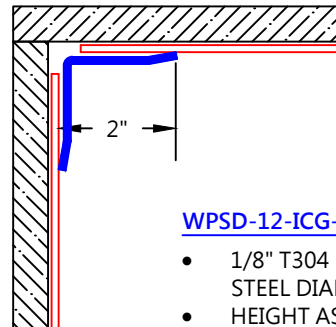
## WPSD-12 DIAMOND PLATE WALL SYSTEM

### FEATURES:

- 1/8" TYPE 304 MILL FINISH STAINLESS STEEL DIAMOND PLATE
- WAINSCOT OR FULL HEIGHT INSTALLATION
- BUTT SEAMS
- CUSTOM HEIGHTS AND ANGLES AVAILABLE
- OTHER GRADES AND FINISHES AVAILABLE

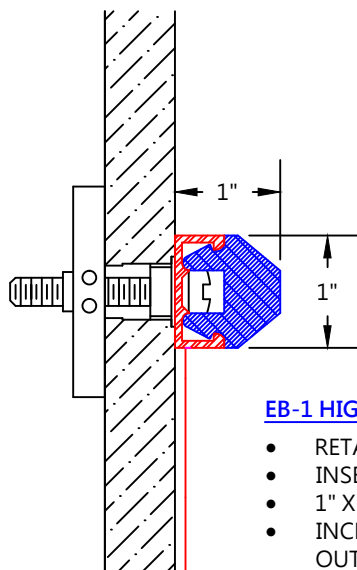
### MOUNTING OPTIONS:

- ADHESIVE:
  - ADH-50 CONSTRUCTION ADHESIVE (INCLUDED)
- MECHANICAL FASTENERS:
  - SUPPLIED BY OTHERS
  - SPECIFY DRILLING REQUIREMENTS WHEN ORDERING



### WPSD-12-ICG-50 INSIDE CORNER:

- 1/8" T304 MILL FINISH STAINLESS STEEL DIAMOND PLATE
- HEIGHT AS SPECIFIED
- 2" WING SIZE
- CUSTOM WINGS SIZES AVAILABLE
- CUSTOM ANGLES AVAILABLE



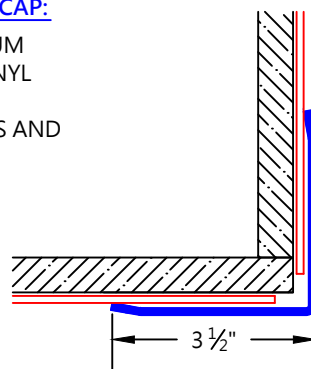
### EB-1 HIGH-IMPACT TOP CAP:

- RETAINER: ALUMINUM
- INSERT: FLEXIBLE VINYL
- 1" X 1" PROFILE
- INCLUDES END CAPS AND OUTSIDE CORNERS



### BUTT SEAMS:

- FACTORY EDGES RECOMMENDED
- SEAL WITH CAULK IF NECESSARY



### WPSD-12-OCG-50 OUTSIDE CORNER:

- 1/8" T304 MILL FINISH STAINLESS STEEL DIAMOND PLATE
- HEIGHT AS SPECIFIED
- 3 1/2" WING SIZE
- CUSTOM WINGS SIZES AVAILABLE
- CUSTOM ANGLES AVAILABLE

CUSTOMER:	PROJECT:	<b>WPSD-12</b>
ARCHITECT:	SALES REP:	