

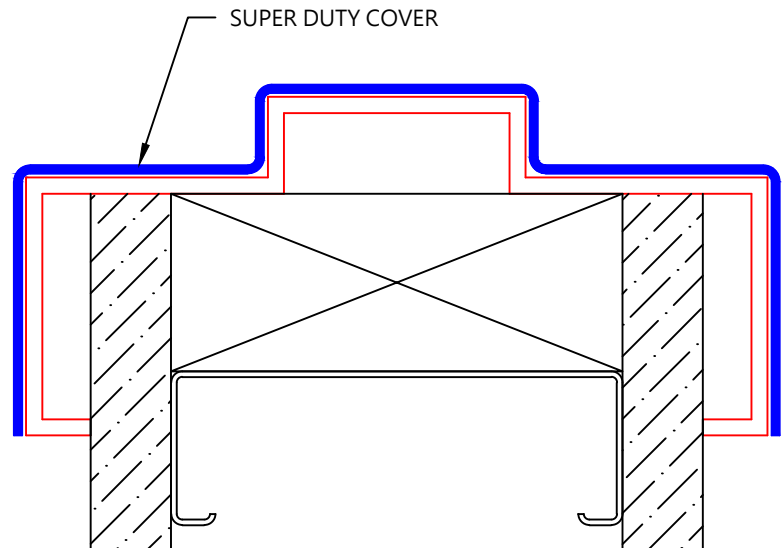
## SDDFC-60 SUPER DUTY DOOR FRAME COVER

### FEATURES:

- ALLOY 5052-H32 .063" THICK ALUMINUM COATED WITH SUPER DUTY POLYUREA
- FABRICATED TO CUSTOM MEASUREMENTS
- CUT OUTS FOR HINGES AND STRIKES AVAILABLE
- HOSPITAL STOP OPTION AVAILABLE

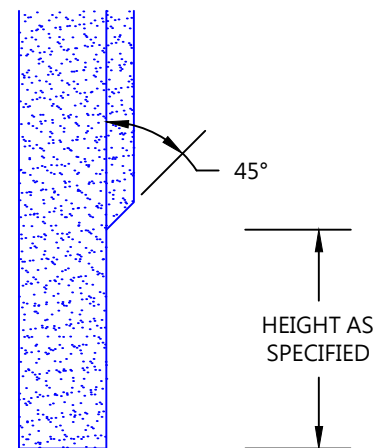
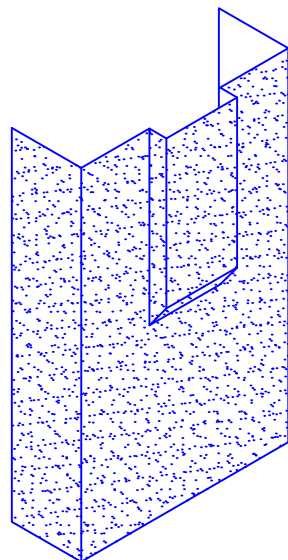
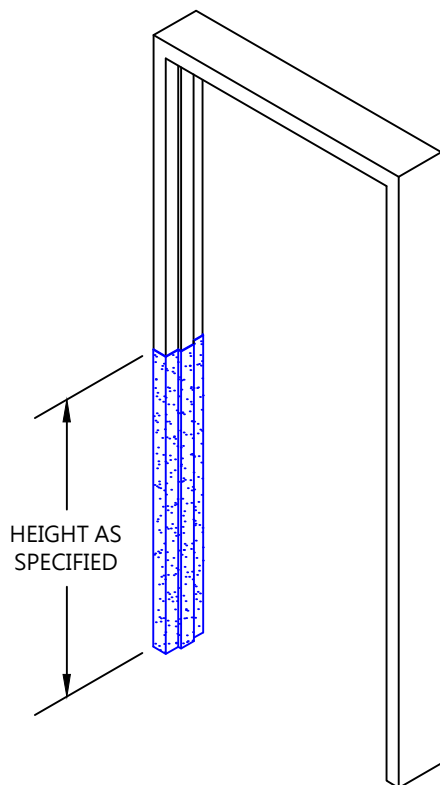
### MOUNTING OPTIONS:

- ADHESIVE:
  - ADH-50 CONSTRUCTION ADHESIVE (SUPPLIED SEPARATELY AS REQUIRED)
- DRILLED:
  - SPECIFY DRILLING REQUIREMENTS WHEN ORDERING



### OPTIONAL HOSPITAL STOP:

- SPECIFY REQUIREMENTS WHEN ORDERING



CUSTOMER:	PROJECT:	<b>SDDFC-60</b>
ARCHITECT:	SALES REP:	