

ProTek Systems, Inc.

PROTEK SYSTEMS, INC.
1250 WALLACE DR UNIT B
DELRAY BEACH, FL 33444
TELEPHONE: 800-598-2153
FAX: 561-395-4771
SALES@PROTEKMAIL.COM

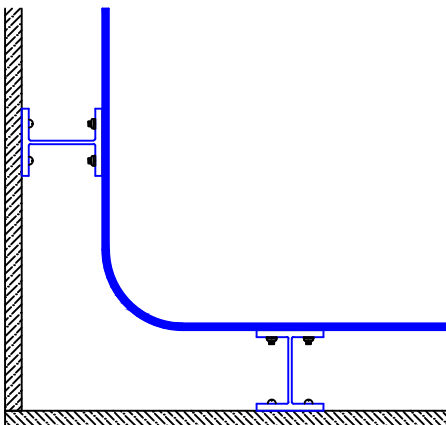
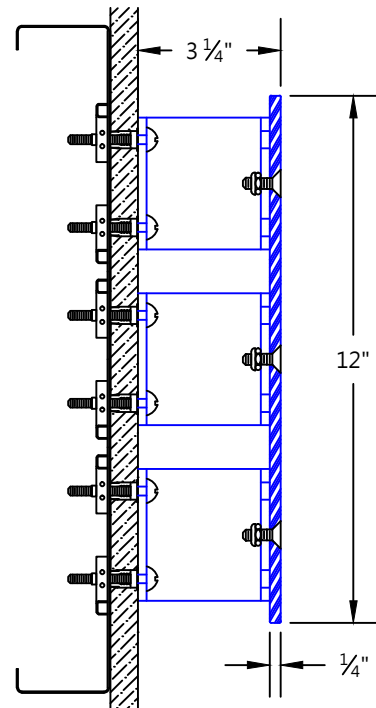
CRA-130 ALUMINUM CRASH RAIL

FEATURES:

- RAIL: 1/4" X 12" ALUMINUM WITH CLEAR ANODIZED FINISH
- BRACKETS: 3" ALUMINUM I-BEAM BRACKETS WITH CLEAR ANODIZED FINISH
- PREFABRICATED TO FIELD MEASUREMENTS WITH PRE-DRILLED COUNTERSUNK HOLES FOR BRACKETS
- CAN BE FABRICATED UP TO 12FT IN (1) SECTION
- FABRICATED WITH FORMED RETURNS AND CORNERS
- WALL RETURNS AND CORNERS FORMED WITH 3" RADIUS
- JOINTS BUTT, NO SPLICING REQUIRED
- CUSTOM ANGLES AVAILABLE

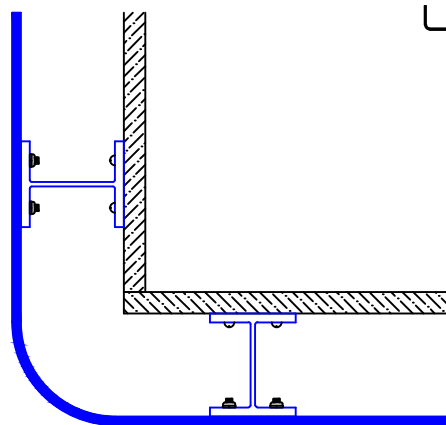
MOUNTING OPTIONS:

- RAILS COME PRE-DRILLED WITH COUNTERSUNK HOLES FOR BRACKET ATTACHMENT.
- BRACKET SPACING WILL VARY ACCORDING TO JOB SITE CONDITIONS. MAXIMUM SPACING NOT TO EXCEED 48" O.C.
- FASTENERS BY OTHERS



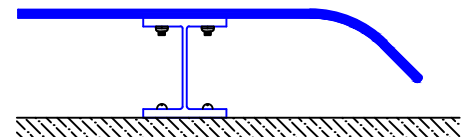
INSIDE CORNER DETAIL:

- PRE-FABRICATED TO FIELD MEASUREMENTS
- PRE-DRILLED COUNTERSUNK HOLES FOR BRACKET ATTACHMENT
- 3" RADIUS BEND



OUTSIDE CORNER DETAIL:

- PRE-FABRICATED TO FIELD MEASUREMENTS
- PRE-DRILLED COUNTERSUNK HOLES FOR BRACKET ATTACHMENT
- 3" RADIUS BEND



WALL RETURN DETAIL:

- PRE-FABRICATED TO FIELD MEASUREMENTS
- PRE-DRILLED COUNTERSUNK HOLES FOR BRACKET ATTACHMENT
- 3" RADIUS BEND
- 135° RETURN TO WALL

CUSTOMER:

PROJECT:

ARCHITECT:

SALES REP:

CRA-130