

ProTek Systems, Inc.

PROTEK SYSTEMS, INC.
 1250 WALLACE DR UNIT B
 DELRAY BEACH, FL 33444
 TELEPHONE: 800-598-2153
 FAX: 561-395-4771
 SALES@PROTEKMAIL.COM

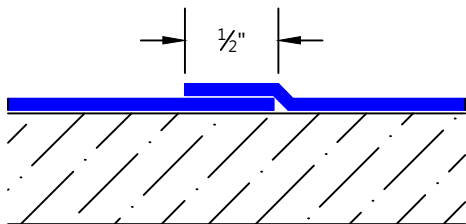
WPSP-12 PATTERNED STAINLESS STEEL WALL SYSTEM

FEATURES:

- TYPE 304 PATTERNED STAINLESS STEEL
- 1/2" OFFSET CONSTRUCTION
- STOCK SIZES: 4FT X 8FT OR 4FT X 10FT SHEETS
- CUSTOM HEIGHTS AND ANGLES AVAILABLE

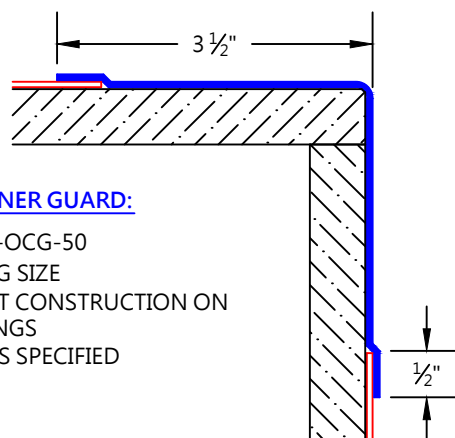
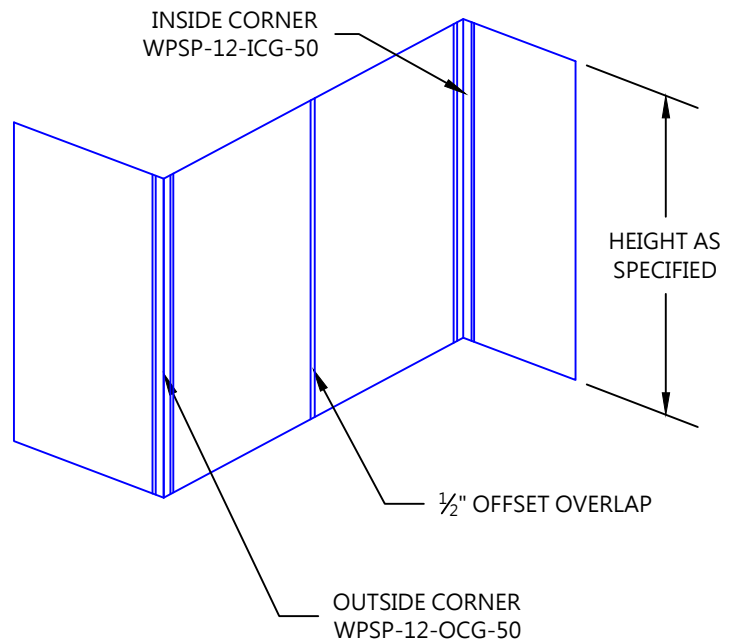
MOUNTING OPTIONS:

- ADHESIVE
 - ADH-50 CONSTRUCTION ADHESIVE (SUPPLIED SEPARATELY AS REQUIRED)
- DRILLED
 - SPECIFY DRILLING REQUIREMENTS WHEN ORDERING



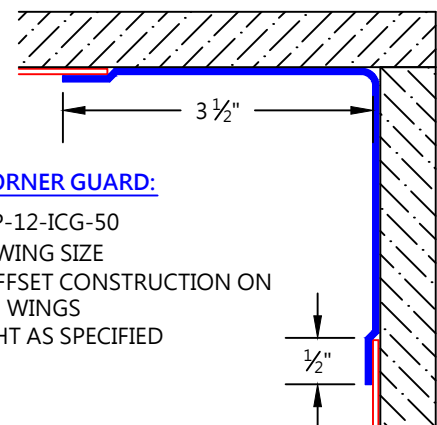
JOINT DETAIL:

- 1/2" OFFSET OVERLAP



OUTSIDE CORNER GUARD:

- WPSP-12-OCG-50
- 3 1/2" WING SIZE
- 1/2" OFFSET CONSTRUCTION ON BOTH WINGS
- HEIGHT AS SPECIFIED



INSIDE CORNER GUARD:

- WPSP-12-ICG-50
- 3 1/2" WING SIZE
- 1/2" OFFSET CONSTRUCTION ON BOTH WINGS
- HEIGHT AS SPECIFIED

CUSTOMER:

PROJECT:

ARCHITECT:

SALES REP:

WPSP-12